

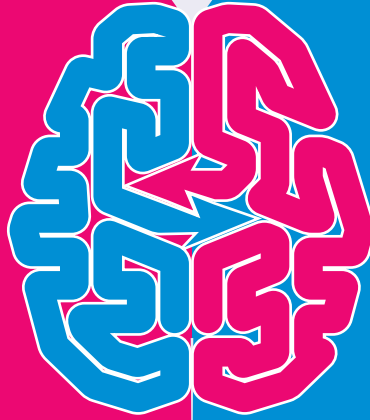
Memory

Memory is person's ability to retain information over time



Working memory

This is where all information is processed. Working memory has limited capacity, storing small amounts of information for a very short time.



Long-term memory



This is where large amounts of information are stored semi-permanently. Transferring knowledge into long-term memory is critical for enabling students to engage in higher order learning tasks such as critical thinking and problem-solving.

What influences memory?



Emotions

WHAT
How we feel influences our ability to learn and retain information

HOW
Create a warm, supportive classroom environment

Retrieval practice

WHAT
We need to practice retrieving and using new content

HOW
Provide regular opportunities for recall and reuse

Spaced practice

WHAT
Spread retrieval and practice over time

HOW
Repeat the same material on different days and in different forms

Dual coding

WHAT
Representing information visually can support memorisation

HOW
Use graphic organisers, infographics, and diagrams

Existing knowledge

WHAT
A new concept is always learned in association with already existing knowledge

HOW
Ensure ideas build sequentially across lessons and students have requisite background knowledge

Information overload

WHAT
We can only process a limited amount of new information at once

HOW
Break new information into small digestible chunks and explicitly teach new concepts