



## Consistency

over time, with caregiving by one or a very small number of teachers to develop secure, trusting relationships



## Calm

and unhurried environments with a flexible and relaxed pace, to develop meaningful and intimate relationships



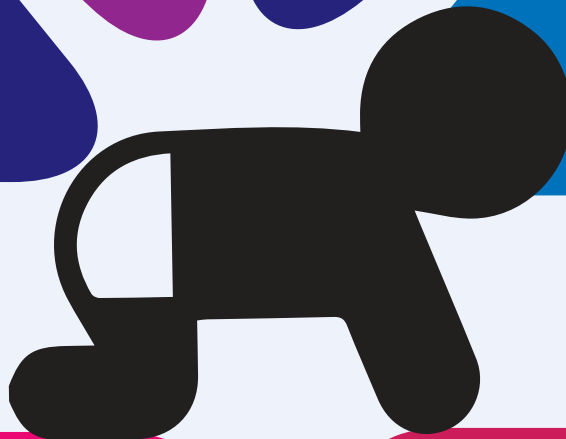
## Listening

and watchful attentiveness to recognise and read the behavioural and body-language cues and communication patterns of infants and toddlers



## Presence

to make infants and toddlers feel safe and nurtured and to positively support their emotional well-being



## Interactions

that build relationships and show sensitivity, presence and an active involvement in the child's experiences and actions.

- This includes
- ✓ Responsiveness
  - ✓ Reciprocity
  - ✓ Imitation
  - ✓ Joint attention



## Connections

with families to work collaboratively to provide the best care and learning experiences and positive relationships for children



## Encourage oral language

by talking with infants and toddlers, singing songs and rhymes, and reading books