

# The latest research and ideas for teachers – all in one place

Kia ora,

## NEW REPORT



### Just published: Curriculum design in schools

**+ WATCH THE WEBINAR**

On September 4, we released a research report based on a survey of over 500 teachers exploring curriculum design approaches and instructional material use in Aotearoa New Zealand schools. You can read the **full report** or a **summary** of the key findings and our recommendations.

We also held a panel discussion to explore the report's key ideas and their implications. The full discussion is available **to watch**.

[Read now](#)

## FREE WEBINARS COMING UP



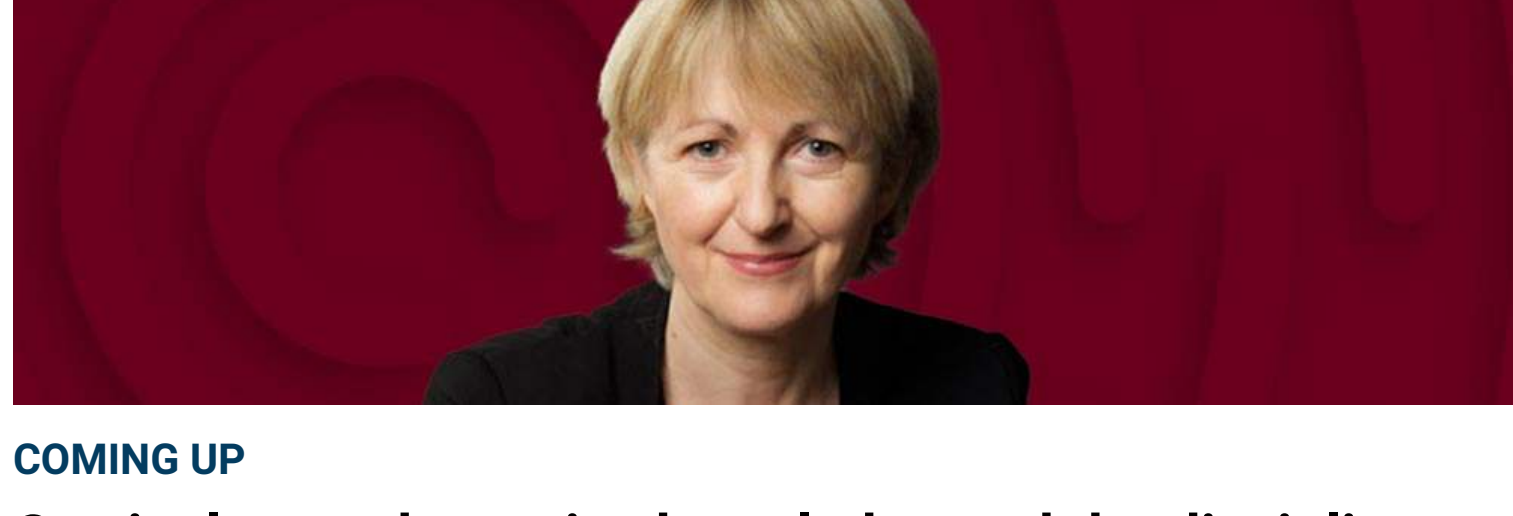
### COMING UP

#### Educational technology and inequality

**8:00PM (NZST) TUESDAY OCTOBER 3**

This webinar will explore trends, issues, and possibilities related to the role of technology in education, with particular focus on the continuing digital inequalities that exist and the social and educational implications of these disparities. It will explore questions around AI, digital divides, inequality, ethics, and social justice and how they relate to the place and role of technology in education. We will be joined by Professor Rebecca Eynon (University of Oxford). Her research explores the relationships between education, the Internet and inequalities, and she has carried out projects in a range of settings (higher education, schools and the home) and life stages (childhood, adolescence and late adulthood).

[Register now](#)



### COMING UP

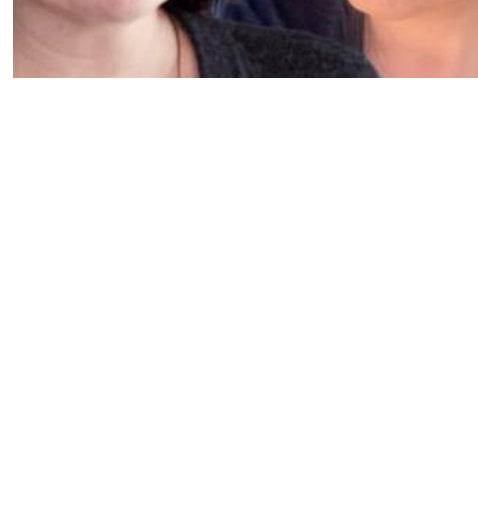
#### Curriculum, substantive knowledge and the disciplines

**8:00PM (NZST) MONDAY OCTOBER 9**

Christine Counsell will explore questions and ideas related to curriculum thinking and curriculum design. She will particularly focus on why substantive knowledge and the disciplines are so important when designing curricula in schools, and what these mean in key subject areas. Christine has a background as a teacher, lecturer at the University of Cambridge, and is now an independent education consultant specialising in curriculum and teacher development.

[Register now](#)

## WEBINARS TO CATCH UP ON...



### WATCH NOW

#### AI in education

Dr Sarah Bickerton and Mandy Henk will break down in plain language what the recent developments in AI are, what they may mean for education, and importantly, what some strategies might be that teachers and schools can use to engage effectively with AI. Mandy is the chief executive of Tohatoha, a charity that supports New Zealand to become a digital nation with a digitally sophisticated population. Sarah is the research and policy lead at Tohatoha.

[Watch now](#)

**Please note: In January 2024, The Education Hub is moving to a subscription model for our webinars**

[Find out how and why.](#)

## NEW ONLINE COURSE



### FOR EARLY PRIMARY TEACHERS

#### Intentional teaching practices for early mathematics

### GROUP DISCOUNTS AVAILABLE

A new online course starts in October, to support early childhood and early primary teachers in the intentional teaching of mathematics for infants, toddlers, and young children through play and planned activities. The course describes the mathematical content that young children need to engage with in their early years and for each content area, teachers are supported to understand how mathematical thinking develops, to recognise instances of children engaging in mathematical thinking in play and everyday contexts, and to explore ways to enhance and support this learning through intentional teaching practices.

### Interviews with experts

- **Dr Melissa Tacy**, mathematician
- **Dr Erica Zippert**, expert in early mathematical teaching and learning
- **Professor Jodie Hunter**, expert on culturally responsive teaching pedagogies for mathematics
- **Jacqui Lees & team** from Pakuranga Baptist Kindergarten

### Plus 12 case studies

illustrating teaching in action at **No.28**, the Faculty of Education early childhood centre at the University of Auckland, and **Tots Corner**, an early childhood centre in Northcote, Auckland.

### Fits around your life

Designed to be taken over a period of 8 to 10 weeks (about 1 hour a week), the flexible nature of the course means that you can fit your learning around your schedule.

### For new entrant/Yr 1 teachers

If you are a teacher of new entrant or year 1 students, this course will likely be relevant to your teaching practice.

[Find out more](#)

## If you like what we do, please consider becoming a supporter

**The Education Hub is a widely respected New Zealand charity (CC54471). We rely on philanthropic support to provide free research-informed resources for teachers. We hugely appreciate all our donors – no matter how large or small their contribution.**

**If you would like to become a supporter, please hop over to our website and make a secure online donation today, or **contact us** to discuss becoming a patron.**

[Yes, I'd like to support teachers](#)

## Would you prefer to hear about ECE-level research?

If you would prefer to receive updates about early childhood education, please take a moment to update the My details section of your Dashboard on our website.

[Update your preferences](#)



the  
education  
hub

Trustworthy, usable knowledge on topics that matter, produced for and by educators.

Copyright © 2023 The Education Hub, All rights reserved.

### ABOUT US

About us  
FAQS  
Contact us

### RESOURCES

Early Childhood resources  
School resources  
Thought Leadership  
Using our resources



Our mailing address is:  
The Education Hub  
Epsom  
Epsom, Auckland 1023  
New Zealand

[Add us to your address book](#)